



Volume 22 Issue 7

Please register online via this link: [DVG| October 2022 Dinner Meeting - The 3rd Robert M. Koerner Award Lecture \(constantcontact.com\)](https://www.constantcontact.com)



**GEO-
INSTITUTE**
**Delaware Valley
Chapter**

September 2022 ASCE-DVGI Joint Meeting

Speaker : Dr. Timothy D. Stark , Professor of Civil and Environmental Engineering at the University of Illinois at Urbana-Champaign

Topic : Oso, Washington Landslide: Failure Mechanism and Runout Analysis

MEETING ABSTRACT:

Professor Stark will present an update of his study of the 22 March 2014 Oso landslide near Oso, Washington. This major and tragic landslide exhibited some interesting aspects of geo-mechanical behavior and is contributing to a better understanding of landslide triggering mechanisms and improved methods of runout analyses for hazard and risk assessments. This study evaluates the accuracy of three runout software packages, DAN3D, Anura3D, and FLO-2D, for modeling the runout of the 2014 Oso landslide and investigates the viability of predicting the runout of other landslides and slope failures, such as, tailings dams. These analyses show the importance of: (i) using a digital terrain model in the runout analysis, (ii) modeling field representative shear strength properties and failure mechanisms, and (iii) predicting runout distance, splash height, and duration to improve public safety.

ABOUT THE SPEAKER:

Timothy D. Stark is a Professor of Civil and Environmental Engineering at the University of Illinois at Urbana-Champaign with an expertise in Geotechnical Engineering. Dr. Stark has been conducting research and teaching on the static and seismic stability of natural and manmade slopes, embankments, and earth structures for over twenty-five (25) years. Dr. Stark has received a number of awards for his research, teaching, and service activities including: 2022-2023 Cross-USA Lecturer from the American Society of Civil Engineers (ASCE); 2021 T.H. Wu Lecturer at Ohio State University; 2019 George H. Norman Medal, ASCE; Best Paper in Geosynthetics International Journal, 2016; 2015 James M. Hoover Lecturers at Iowa State University; Thomas A. Middlebrooks Award, ASCE, 2013 and 1998; Associate Editor Award, Journal of Geotechnical and Geoenvironmental Engineering, ASCE, 2012; Journal of Legal Affairs and Dispute Resolution in Engineering Scholarly, Paper, ASCE, 2011; R.M. Quigley Award from the Canadian Geotechnical Society, 2003, and Walter L. Huber Research Prize, ASCE, 1999.





**GEO-
INSTITUTE**
**Delaware Valley
Chapter**

ANNOUNCEMENTS

2022 Landreth Steward of the Environment Award

Winner 2022: Theresa Andrejack Loux, Ph.D., P.E.,



Geosynthetic Institute

The Geosynthetics Institute (GSI) provide this award to recognize “distinguished engineering achievement related to the environment.” We are proud to announce our own board member at DVGI as the 2022 winner: Theresa Andrejack Loux, Ph.D., P.E.

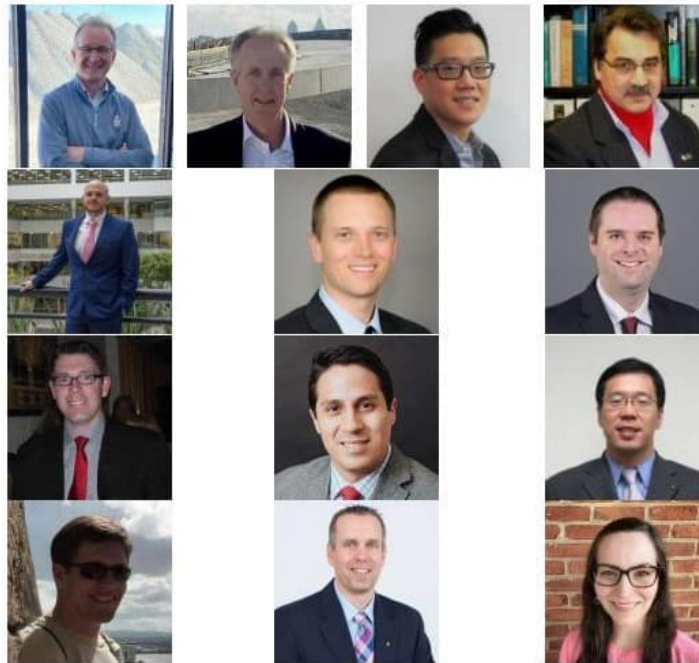
Congratulations, Theresa!



**GEO-
INSTITUTE**
**Delaware Valley
Chapter**

ANNOUNCEMENTS

2022-2023 Board of Directors



Chair

James M. Beideman, P.E.
(jbeideman@kleinfelder.com)

Newsletter Director

Neil Scafonas, P.E.
(neil.scafonas@aecom.com)

Director of Scholarship

Eric Backlund, P.E.
(Eric.Backlund@camposepc.com)

Past Chair

Russ Preuss, P.E.
(rpreuss@gfnet.com)

Web Advisor

Jeremy Brown, P.E.
(jbrown@schnabel-eng.com)

At-Large Board Advisors

Lei Gu, P.E.
(lgu@gfnet.com)

Vice-Chair

Theresa Loux, Ph.D., P.E.
(tloux@aeroaggregates.com)

Academic Liaison

Joseph Coe, Ph.D.
(joseph.coe@temple.edu)

Daniel Marano, P.E.
(dmarano@pennoni.com)

Treasurer

Conrad Cho, P.E.
(ccho@langan.com)

ASCE Liaison

Archie Filshill, Ph.D.
(archie@aeroaggregates.com)

Secretary

Robert Crawford, P.E.
(bobc@jjaconstruction.com)

Board Advisors

Craig Calabria, Ph.D., P.E.
(crcalabria@msn.com)



**GEO-
INSTITUTE**
Delaware Valley
Chapter

ANNOUNCEMENTS



Geosynthetic Institute

Upcoming GSI Webinars for 2022

11:30 AM—1:00 PM (Eastern Time)
(1.5 PDH each / upon completion of exam)

Topics, Dates and Registration at www.geosynthetic-institute.org/webinar.htm

September 7	W-26	Applications and Design of Geotextile Tubes - Description
October 12	W-27	Stability Design of Landfill Cover Soils - Description
November 9	W-29	QA/QC of Geosynthetics - Description
December 7	W-34	Geosynthetics in Roadways - Description

ALL WEBINARS WILL BE RECORDED AND CAN BE PURCHASED FOR VIEWING AT
YOUR CONVENIENCE

GSI/GMA Members \$200.00 USD per each Webinar
Non GSI/GMA Members \$250.00 USD per each Webinar

ASCE/G-I Members:
Read past and present issues of Geo-Strata magazine online at www.asce.org



**GEO-
INSTITUTE**
**Delaware Valley
Chapter**

ANNOUNCEMENTS

Upcoming Dates for 2022-23 Dinner Meetings and events are as follows:

10/18/22 - Jie Han - Koerner Lecture

11/15/22 – Eli Brinker and Elisabetta Iannetti - Pennoni 2021-2022 Project of the Year
Winner “uCity Square Development”

One PDH will be awarded for most meetings that you attend.

If you are interested in presenting at one of our monthly meetings or have ideas about potential speakers, please get in touch with a DVGI board member.

On Director's Cut

Geo-Institute Director Brad Keelor interviews G-I members about anything and everything. You might hear about their favorite geotechnical project, their favorite music, or their favorite pie. In Episode 18 of Season 3, Brad speaks with Theresa Andrejack Loux of Aero Aggregates!

See the video here: <https://youtu.be/Gn-aDAHfCXg>

ASCE/G-I Members:
Read past and present issues of Geo-Strata magazine online at www.asce.org



**GEO-
INSTITUTE**
**Delaware Valley
Chapter**

ANNOUNCEMENTS

DELAWARE VALLEY ENGINEER OF THE YEAR 2023 AWARD



Engineers Club of Philadelphia
Founded in 1877

Delaware Valley Engineers Week | February 16-25, 2023



Call for Nominations – Delaware Valley Engineer of the Year

Attention all Engineering and Technical Societies of the Delaware Valley!

On behalf of the engineering and technical societies of the Delaware Valley, the Engineers' Club of Philadelphia is issuing this call for nominations. If you have an individual that you feel is worthy of such recognition, please nominate him/her for 2023 Delaware Valley Engineer of the Year. **The deadline for submission of nomination packages is 5:00 pm on Friday, October 28, 2022.** Societies are encouraged to team up with other societies in preparing a nomination.

You are encouraged to contact the EOY Coordinator* to let us know if you are considering or intending to nominate a candidate. Information on all the candidates will be posted at www.engrclub.org prior to the election.

The complete *Engineer of the Year Nomination Packet* contains important details on the qualifications, election process, and duties of the selected Engineer of the Year and should be read by all intending to submit a nomination. The packet is available at www.engrclub.org.

NOMINATION PROCESS

Nominations must be submitted by one of the technical and professional societies in the Delaware Valley by **Friday, October 28, 2022.**

NOMINATION SUBMISSION

Submit the Nomination Form, a 1000-word biography, and photograph to Mark Kinnee*. (See the nomination form for file specifications.)

The candidates will also be asked to attend the election and address the delegates prior to the election.

ELECTION PROCESS

Delegates from the Engineering and Technical Societies of the Delaware Valley¹ will vote on the Delaware Valley Engineer of the Year the week of **November 14, 2022**. The voting will most likely be held electronically and additional information will be provided.

Each society is entitled to appoint two delegates to the election. Each society's list of delegates is due to the Club* by **Friday, November 4, 2022.**

¹ Bucks, Chester, Delaware, Montgomery and Philadelphia counties in Pennsylvania and Burlington, Camden, Gloucester, Mercer and Salem counties in Southern New Jersey)

QUALIFICATIONS AND DUTIES OF THE DV EOY

There are specific qualifications and duties expected of the EOY, as noted in the Engineer of the Year Nomination Packet. Briefly, the EOY should have a career of achievement and leadership, be a person of stature and visibility; and be a person who will represent the profession well and proudly acclaim its virtues.

***Questions and Submissions:** Nominations and any questions should be directed to the EOY Coordinator, Mark Kinnee, PE at (215) 922-8081, x1667 or markkinnee@urbanengineers.com. The list of delegates to the election should be emailed to the Club at contact@engrclub.org.



**GEO-
INSTITUTE**
**Delaware Valley
Chapter**

ANNOUNCEMENTS

HAVE DVGI PUBLISH YOUR ARTICLE, ADVERTISEMENT, OR JOB POSTING

- Do you have an interesting article on a project or individual in your organization that you would like to have published in the DVGI newsletter?
- Would you like to get the word out about a job opening, new venture, etc. to our membership via the newsletter?

Please submit your articles or news items for consideration in the next edition of the newsletter or get in touch about our reasonably priced advertising by contacting Neil Scafonas (neil.scafonas@aecom.com).



**GEO-
INSTITUTE**
Delaware Valley
Chapter

ADVERTISEMENTS



Testing and Analysis Services for Deep Foundations

GRL Pennsylvania Office | +1 (610) 459-0278 | gri-pa@grlengineers.com



- Dynamic Pile Monitoring
- Drilled Shaft Profile & Verticality Evaluation
- Drilled Shaft Base Cleanliness Evaluation
- APPLE Dynamic Load Testing
- Bi-Directional Static Load Testing
- Thermal Integrity Profiling
- Static Load Testing
- Crosshole Sonic Logging
- Low Strain Integrity Testing



**GEO-
INSTITUTE**
Delaware Valley
Chapter

ADVERTISEMENTS



Our North American
companies have joined
together and rebranded
to Keller.

610-353-0600
keller-na.com

BENCOR
A KELLER COMPANY

**HAYWARD
BAKER**
A KELLER COMPANY

KELLER
CANADA

**CASE
ATLANTIC**
A KELLER COMPANY

**HJ
FOUNDATION**
A KELLER COMPANY

MORETRENCH
A HAYWARD BAKER COMPANY

**CASE
FOUNDATION**
A KELLER COMPANY
**MCKINNEY
DRILLING**
A KELLER COMPANY



The world's leading geotechnical
specialty contractor



**GEO-
INSTITUTE**
**Delaware Valley
Chapter**

ADVERTISEMENTS

Geotechnical Engineers Available Positions

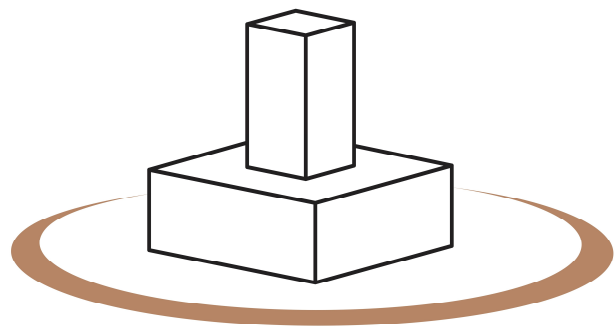
GeoStructures has immediate openings for energetic, highly motivated geotechnical engineers with 1 to 3 years of experience in subsurface investigations, including test boring and test pit supervision, foundation and retaining wall analysis and design, ground improvement and advanced soil laboratory testing capabilities. Experience with the finite element method, soil structures interaction, soil dynamics and earthquake engineering are also desired.

Strong academic background, creativity, and excellent verbal and written communication skills are required. Successful candidates must have a drive for excellence, ability to work in a team setting and leadership skills. A Master's degree in geotechnical engineering, geomechanics or soil-structure interaction is required.

GeoStructures has a technically rich environment that fosters professional development. We offer an excellent compensation package including 401(k) plan and tuition reimbursement for advanced graduate studies.

Send resume to: yoliver@geostructures.net

**GeoStructures, Inc.
1000 West 9th Avenue
King of Prussia, PA 19087
www.geostructures.net**



G e o S t r u c t u r e s



**GEO-
INSTITUTE**
**Delaware Valley
Chapter**

ADVERTISEMENTS



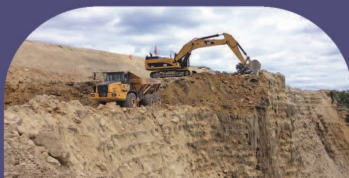
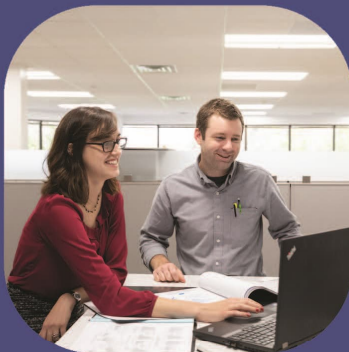
GRADUATE GEOTECHNICAL ENGINEER

We are seeking Geotechnical Engineers with an excellent reputation to join our Lehigh Valley (Bethlehem, PA), Philadelphia, PA and Haddon Heights, NJ offices as Graduate Level Engineers. In this full-time position, the successful candidates will be responsible for assisting staff and senior level engineers with the execution of multiple concurrent geotechnical projects and working with other staff engineers and geologists as well as communication and coordination with clients, drilling subcontractors and other design professional on the project team. This position will also require working with other field staff and coordination with clients and contractors during construction. As a Graduate Level Engineer, this individual will be performing various site visits. Responsibilities will include assistance with and performing geotechnical engineering investigations, preparing reports, and developing recommendations. Excellent communication and organizational skills are a must as well as basic geotechnical engineering experience. Must be capable of overseeing construction inspection operations as well. Must be able to work effectively as part of a team and individually, balance workload and meet deadlines. Please send resumes directly to fbrinker@pennoni.com for immediate consideration.



**GEO-
INSTITUTE**
**Delaware Valley
Chapter**

ADVERTISEMENTS



We are Hiring!

Our Chadds Ford, PA office is hiring —
Please click on links below to learn more!

- + Geotechnical Project Engineer
(8+ years of relevant experience)
- + Geostructural Project Engineer
(8+ years of relevant experience)
- + GeoDesign Staff Engineer
(0-2 years of professional experience)
- + Resident Project Representative
(10+ years of relevant experience)


schnabel-eng.com





**GEO-
INSTITUTE**
**Delaware Valley
Chapter**

ADVERTISEMENTS



Intern Philly

Embrace Independence, Explore Your Path to Success

Arcadia Abroad is bringing its expertise to create experientially rich, place-based education at home to Philadelphia. Students will make Philly their classroom with an internship at local organizations and take a selection of elective courses taught in Center City using the local history, culture, and environment to investigate their academic learning.

Combining Arcadia's local knowledge with the knowledge the College of Global Studies has gained from building experiential programs abroad for more than 70 years, Intern Philly maximizes learning for students. It incorporates high impact educational practices that pack a punch for students' learning as well as their professional pursuits.

By creating a community of learners who are undertaking internships and coursework together and providing the framework for students to reflect critically on their learning, Intern Philly is built to teach and mentor students as they develop independence and resilience while exploring urban life and the world of work.

Hallmarks of Intern Philly:

- Integration of theoretical and practical knowledge through customized internship placements and their connections to learning through doing.
- Teaching and learning engagement involved in structured interactions with local and professional communities to develop capacity for critical thinking and self-reflection.
- Mentored experience with navigating complex issues of race, culture, and diversity through working and learning in Center City Philadelphia.
- Growth of skills and abilities desired by employers including independence, adaptability, initiative-taking, and problem-solving.
- Development of a Philadelphia network for career opportunities and/or graduate study.
- Health, safety, and student life expertise to support student learning and engagement.

SUPERVISOR'S RESPONSIBILITIES

The Field Supervisor contracts to be a mentor to the student, particularly in relation to the work content, workplace organization, and industry. The student's learning is a primary focus for a supervisor. Specific ways a supervisor can assist the student include:

- Helping student with their learning plan of action and providing suggestions for things to consider, as work tasks and responsibilities develop
- Participating in meetings with Academic Director to discuss learning plan of action, contributions, tasks and responsibilities, etc.
- Providing some project-based work in which student can take some ownership and produce a deliverable by the final week of the internship
- Meeting with student to provide feedback, criticism, and such about progress, work products, and achievements
- Offering advice concerning professional development and career aspirations
- Submitting a formal written evaluation at end of the semester of the student's work performance and products, contributions, and skills' development, as well as student's work habits and practices as a member of the organization

CONTACT INFORMATION:

Mark Andrew Clark, Ph.D., Academic Director

Intern Philly, Arcadia University

(at-home office presently on Broad Street, 2513 South Broad Street, Philadelphia, PA 19148)

Cell: 717-940-8960

Email: clarkm@arcadia.edu

**GANNETT FLEMING**

Excellence Delivered As Promised

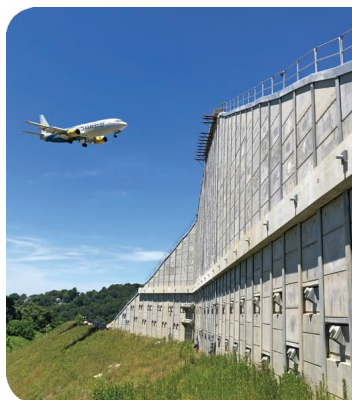
Geotechnical Engineering • Environmental Services
Transportation Planning • Highways • Bridges
ITS & Traffic Engineering • Transit & Rail
Water/Wastewater • Stormwater Management
Geographic Information Systems

Ara G. Mouradian, PE, PEng
Valley Forge Office • 610.715.2564
www.gannettfleming.com

ISO 9001:2015
CERTIFIED

Ultra-Lightweight Foamed Glass Aggregate

85-90% Lighter than quarried aggregates
High friction angle
Excellent insulating properties

(833) 261-8499 aeroaggregates.comSolving
Infrastructure
Challenges

610-696-6066
schnabel-eng.com

**JAMES J. ANDERSON
CONSTRUCTION COMPANY, INC.**

6958 Torresdale Avenue, Suite 200
Philadelphia, PA 19135
215-331-7150

ROBERT CRAWFORD, P.E., M. ASCE
Structure Division Chief Engineer
e-mail: bobc@jjaconstruction.com

**EARTH
ENGINEERING
INCORPORATED**

Geotechnical Engineers & Geologists

SHORING & UNDERPINNING DESIGN
RETAINING WALL DESIGN
CONSTRUCTION MONITORING AND SOILS LABORATORY

Corporate Headquarters
115 W Germantown Pike, Suite 200
East Norriton, PA 19401
610-277-0880

Full-Service Locations

West Berlin, NJ
856-768-1001
Mechanicsburg, PA
717-697-5701
Emmaus, PA
610-967-4540

Service you can trust
Quality you can count on

www.earthengineering.com**INOVA
GEOSYNTHETICS**

INNOVATIVE GEOSYNTHETIC SOLUTIONS AND APPLICATIONS

High Strength Reinforcement

Drainage

Lightweight Fill

Recycled Materials

Sediment Capping

Remediation

Geosynthetic Lining Systems

Sustainable Solutions



Archie Filshill, Ph.D. archie@inova-geo.com +1 215-416-7373

**KLEINFELDER**
Bright People. Right Solutions.

James M. Beideman, PE
Program Manager

jbeideman@kleinfelder.com

180 Sheree Blvd., Suite 3800
Exton, PA
19341

o l +1 610.594.1444
ext.109
m l +1 610.656.4419
f l +1 610.594.2743

kleinfelder.com**LANGAN**Integrated engineering and
environmental services

Jared Green, PE
Senior Associate

langan.com

1818 Market St #3300,
Philadelphia, PA 19103
(215) 845-8900

Technical Excellence · Practical Experience · Client Responsiveness



HILLIS-CARNES
ENGINEERING ASSOCIATES

(484) 434-1000 | www.hcea.com



CMT

services group



CONETEC



RIMKUS
CONSULTING GROUP, INC.

Forensic Engineers and Consultants



Geotechnical speciality contractor

North America Keller companies Bencor, Case Atlantic, Case Foundation, Hayward Baker, HJ Foundation, Keller Canada, McKinney Drilling and Moretrench have joined together and rebranded to Keller.

Martin McDermott, PG
Senior Business Development Manager
908-209-3914 • mmcdermott@keller-na.com

Matt Klanica
Vice President
610-353-0600 • mjklanica@keller-na.com

Philadelphia office: 610-353-0600

www.keller-na.com

Design of Excavation Support, Ground Anchors, Underpinning, Cofferdams, Micropiles...

1220 Valley Forge Road, Suite 14, Phoenixville, PA 19460

Phone: (610) 933-8353 • Fax: (610) 933-8359

www.PeirceEngineering.com • Mail@PeirceEngineering.com


GeoStructures, Inc.

Geotechnical Engineering & Construction Material Testing

- drilling and CPT services
- laboratory testing
- petrographic examination
- foundation/retaining wall design
- real-time geotechnical instrumentation
- environmental assessments

King of Prussia, PA 610.265.1818 www.geostructures.net

**menARD**

Ground Improvement Starts Here

Philadelphia Office:

Brandon Buschmeier, P.E.
Director of Engineering
Menard USA
(215) 971-2648
bbuschmeier@menardgroupusa.com

- Vertical Wick Drains
- Vacuum Consolidation
- Earthquake (EQ) Drains
- Dynamic Compaction
- Dynamic Replacement
- Rapid Impact Compaction
- Vibro-compaction
- Aggregate Piers
- Vibro Stone Columns
- Controlled Modulus Columns
- Bi-Modulus Columns
- Soil Mixing

**Low-Density Cellular Concrete**

Permeable / Non-Permeable

- ▲ Soft Soil Remediation
- ▲ Slope Stabilization
- ▲ Bridge Approach
- ▲ Utility Protection
- ▲ Annular Fill



610.398.7833
aerixindustries.com
info@aerixindustries.com
Allentown, PA



...For Trusted Quality and Service

**Engineers, Inc.**

Deep Foundation Testing & Analyses



GOLDER
MEMBER OF WSP



Kyle T. Plaza, P.E.
Northeast Region Manager

Cell: 609.577.2724
Email: kyle.plaza@subsurfaceconstructors.com

SUBSURFACE CONSTRUCTORS, INC.

8919 NEW FALLS RD, SUITE 15, LEVITTOWN, PA 19054
www.subsurfaceconstructors.com

**Customized Solutions****Delaware Valley Locations**

Philadelphia | Exton
Lehigh Valley | Mt. Laurel

610 868 4201 | colliersengineering.com
Maser Consulting is now Colliers Engineering & Design

Accelerating success.



**Joseph Thomas Coe, Ph.D.**

Assistant Professor

Civil & Environmental Engineering

1947 N. 12th Street

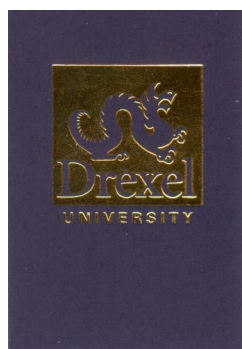
Philadelphia, PA 19122-6018

t 215-204-6100 f 215-204-4696

e-mail joseph.coe@temple.eduwww.temple.edu/engineering/cee

VILLANOVA UNIVERSITY
Study part- or full-time.
www.vuengineering.com

Combine geotechnical courses with environmental, structural, transportation, or water resources courses or create your own interdisciplinary program.

PennMaster of
Science in
Applied
Geosciences**WHERE THEORY
MEETS PRACTICE.**Learn more about **Penn's
Master of Science in Applied
Geosciences.****WWW.UPENN.EDU/MSAG****LEHIGH
UNIVERSITY.****Muhannad T.
Suleiman, Ph.D.**
*Associate Professor***Department of Civil and
Environmental Engineering**
STEPS Building
1 West Packer Avenue
Bethlehem, PA 18015-3001
(610) 758-2592 Fax (610) 758-6405
e-mail: mts210@lehigh.edu
<http://www.lehigh.edu/~incee>**Beena Sukumaran, PhD**
*Chairperson
Professor***Department of Civil &
Environmental Engineering**
Rowan Hall
201 Mullica Hill Road
Glassboro, NJ 08028856-256-5324
856-256-5242 fax
sukumaran@rowan.edu**LAFAYETTE
COLLEGE****Department of Civil and Environmental Engineering****Acopian Engineering Center**
740 High Street • Room 319 • Easton, Pennsylvania 18042
TEL 610-330-5437 • FAX 610-330-5059**Joseph P. Martin, Ph.D., P.E.**
Professor**Department of Civil, Architectural and
Environmental Engineering**
3141 Chestnut Street
Philadelphia, PA 19104TEL 215.895.2363
610.446.6477
FAX 215.895.1363
E-MAIL martinjp@drexel.edu
www.drexel.edu/coe/cae**Department of Civil
& Environmental Engineering****Christopher L. Meehan, Ph.D., P.E., FASCE**
Associate Professor
Director, Delaware Center for Transportation355 Du Pont Hall
Newark, DE 19716Phone: 302-831-6074
Fax: 302-831-3640
Email: cmeehan@udel.edu<http://udel.edu/~cmeehan/>

Widener University